



**Barcelona
Supercomputing
Center**

Centro Nacional de Supercomputación



EXCELENCIA
SEVERO
OCHOA

Autosubmit, Cylc and ecFlow

Domingo Manubens



- M4 HR introduction (D9.6)
- Autosubmit
- Cylc
- ecFlow
- Assessment report (D9.3)
- Features compared
- Autosubmit roadmap

Multi-member climate experiment



Barcelona
Supercomputing
Center
Centro Nacional de Supercomputación

EXCELENCIA
SEVERO
OCHOA



1981

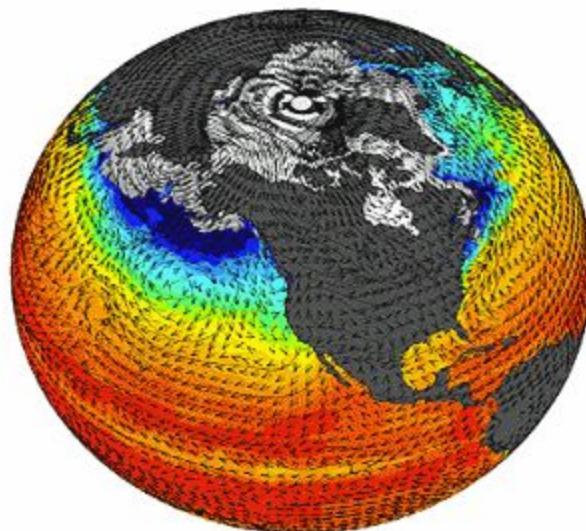
2015

1st Jan

1st Jan

10 years

4 members



~ 12000 CHPSY

Multiple HPC infrastructures



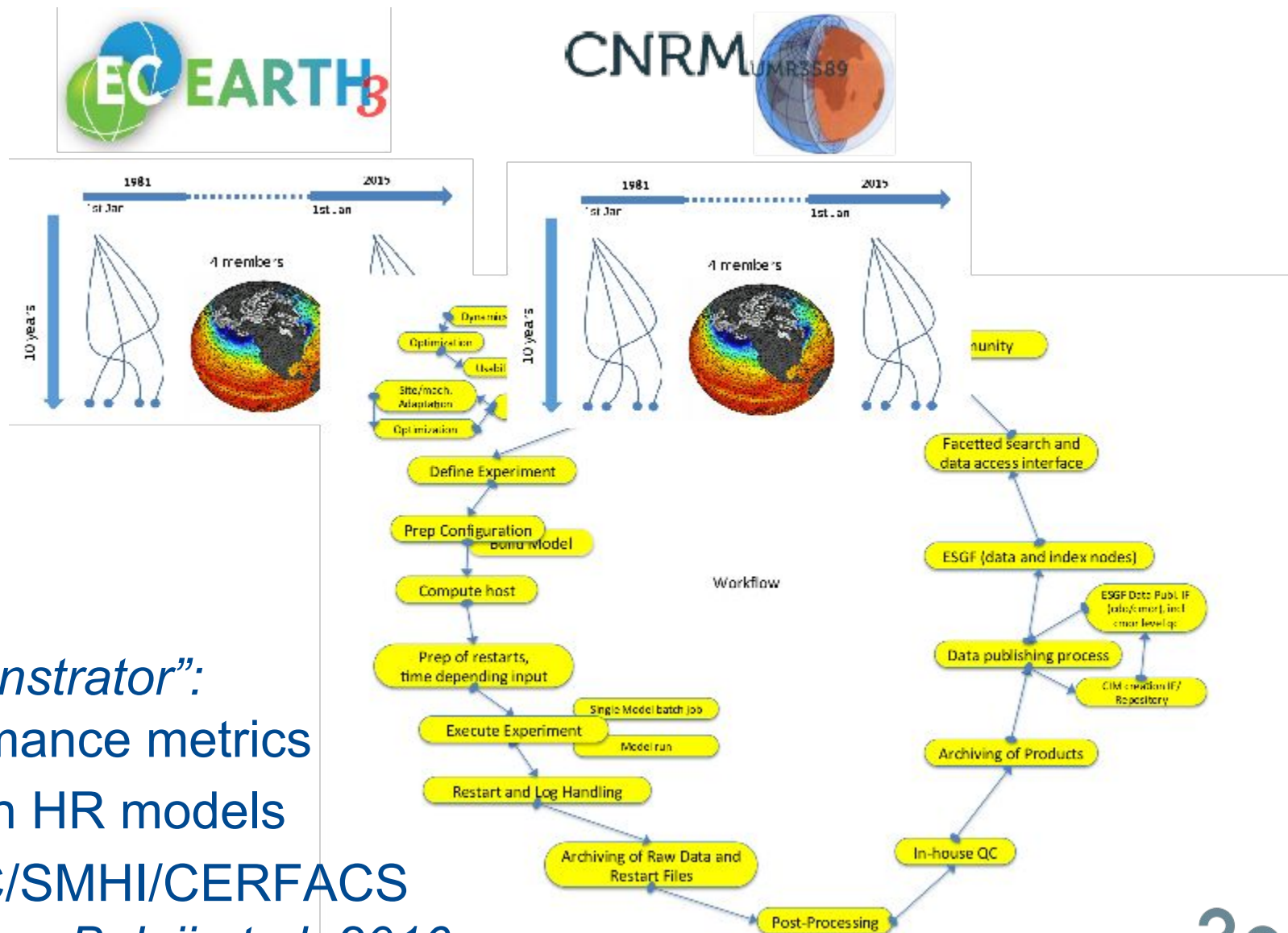
**Barcelona
Supercomputing
Center**
Centro Nacional de Supercomputación

EXCELENCIA
SEVERO
OCHOA

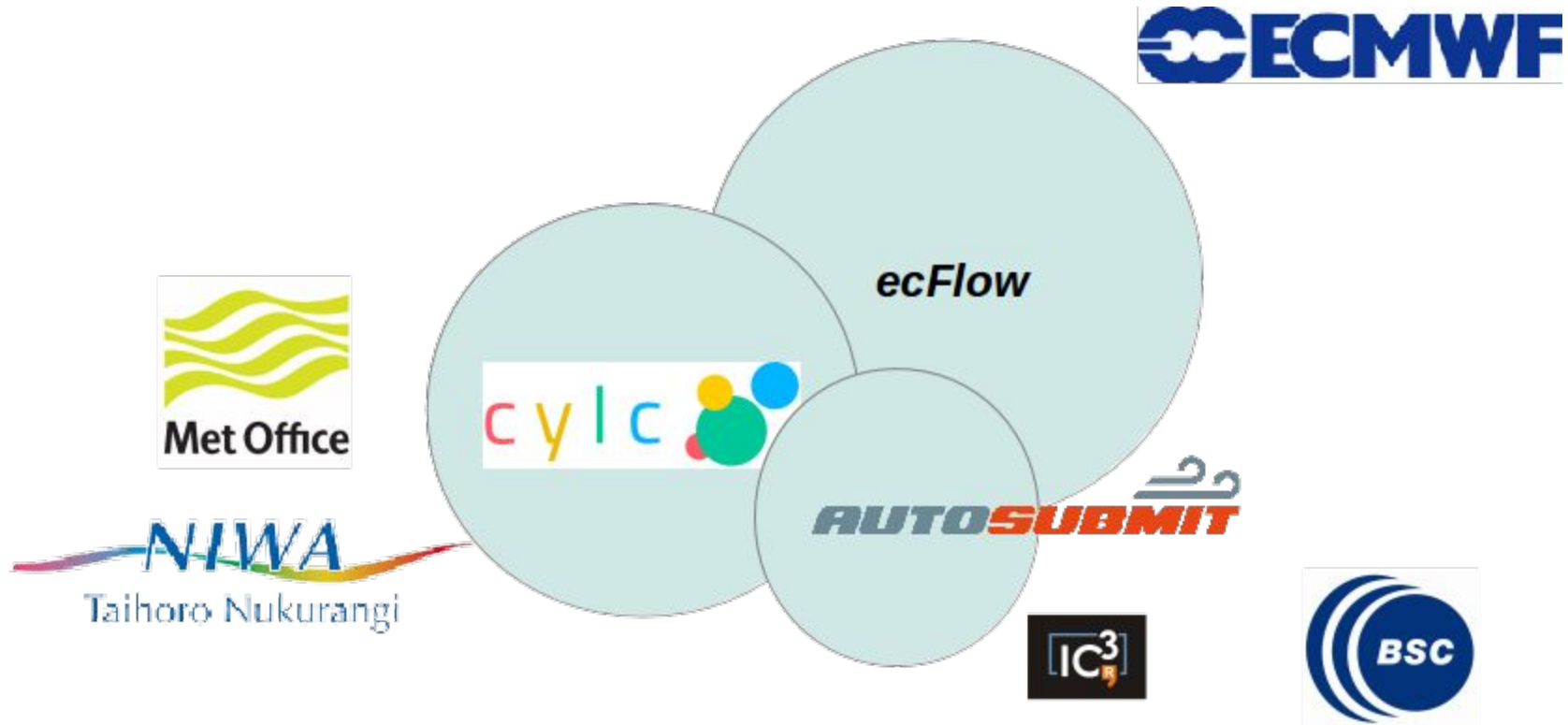
Computing resources funded by: National / EU / International projects



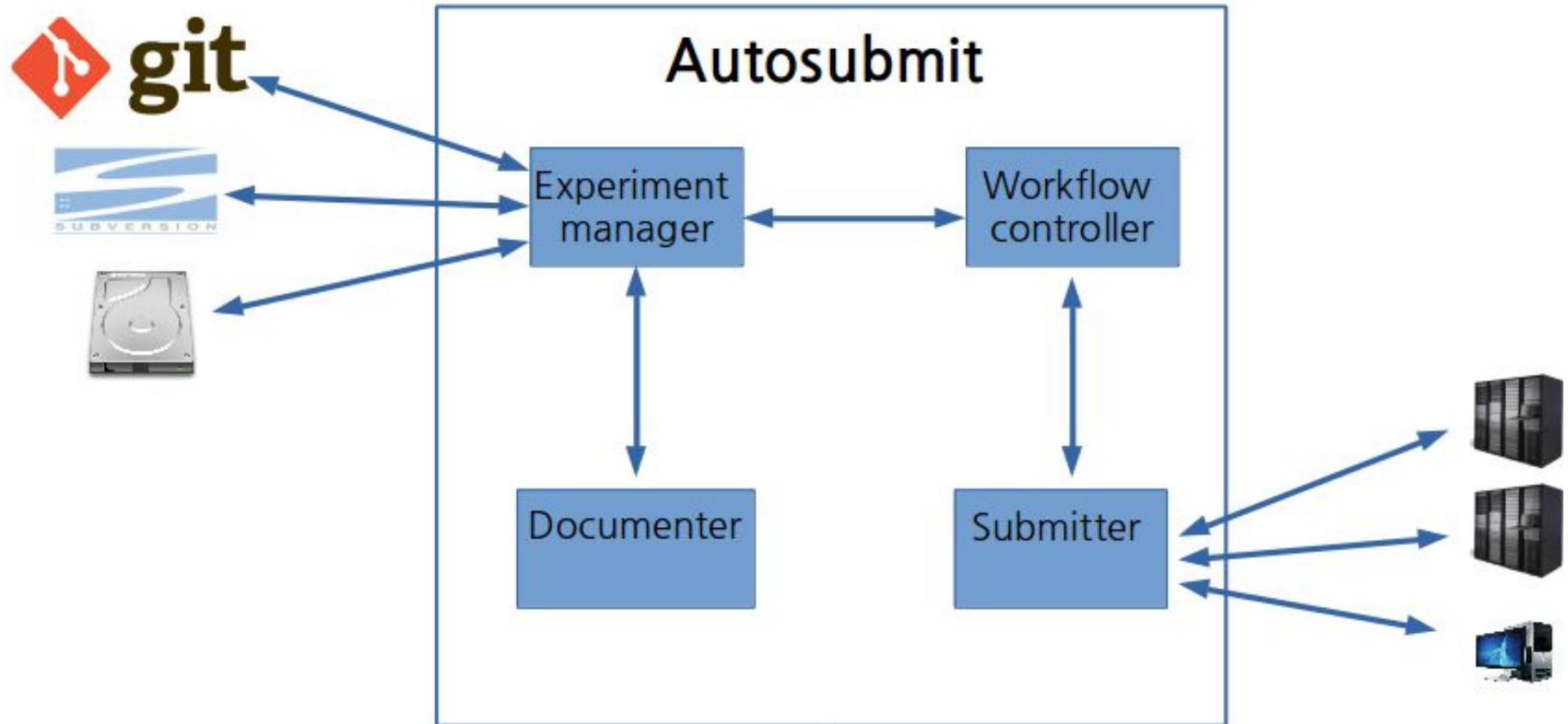
Multi-model multi-member climate experiment workflow (D9.6) (WiP)

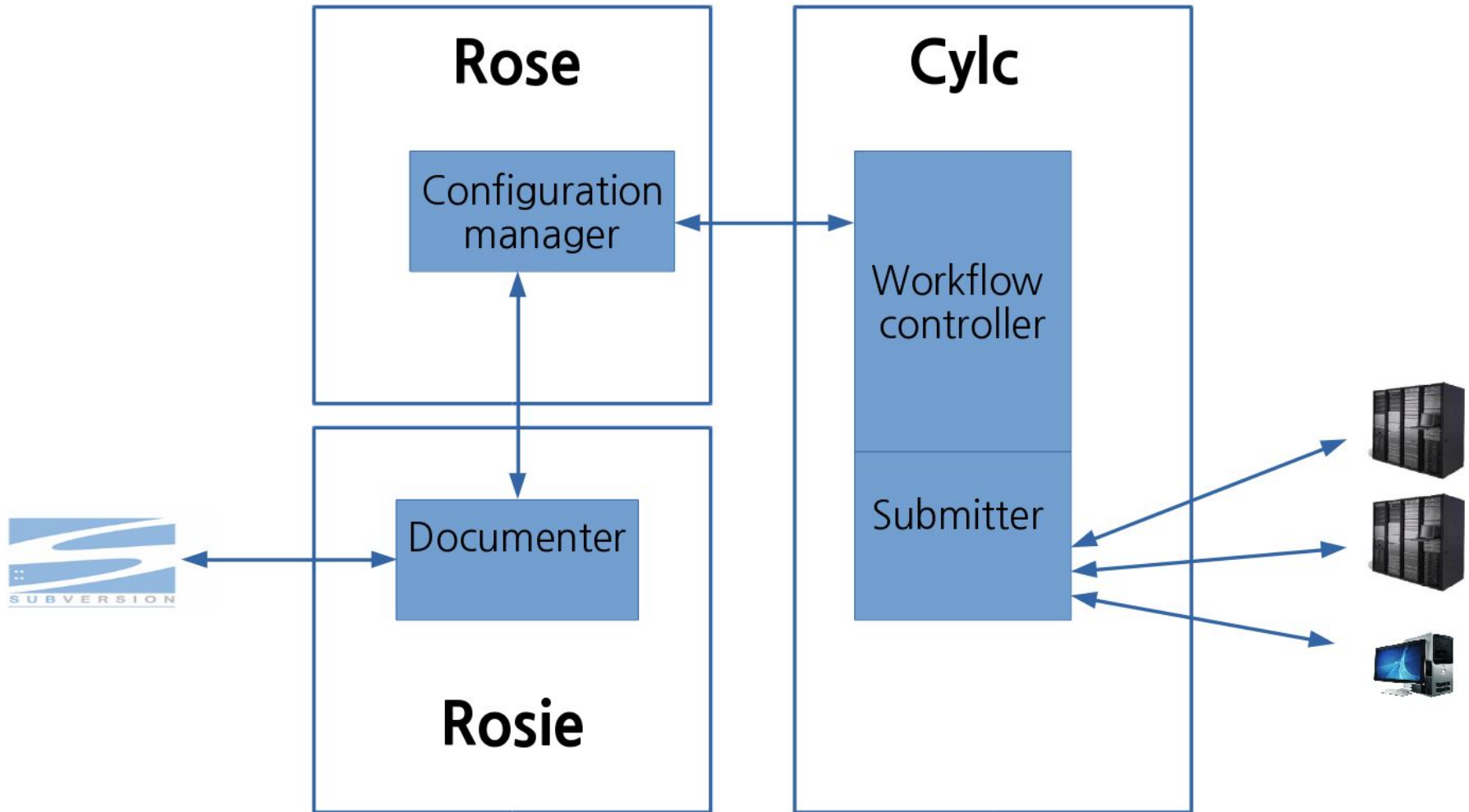


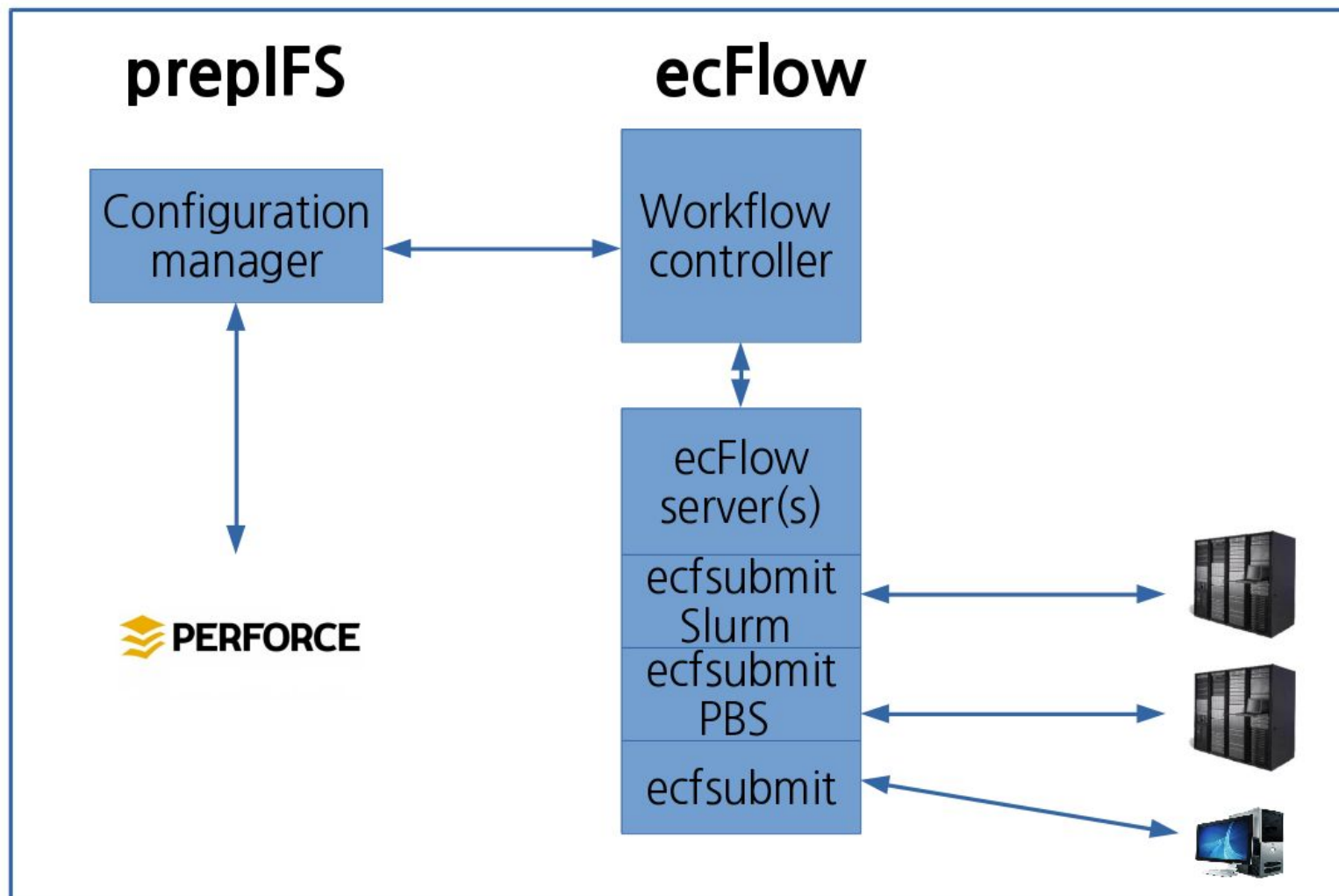
“Demonstrator”:
performance metrics
for both HR models
at BSC/SMHI/CERFACS
based on *Balaji et al. 2016*



The three scheduling and submission systems have been tested and evaluated with regard to the suitability for multi-model multi-member high resolution (M4 HR) experiments (D9.3)



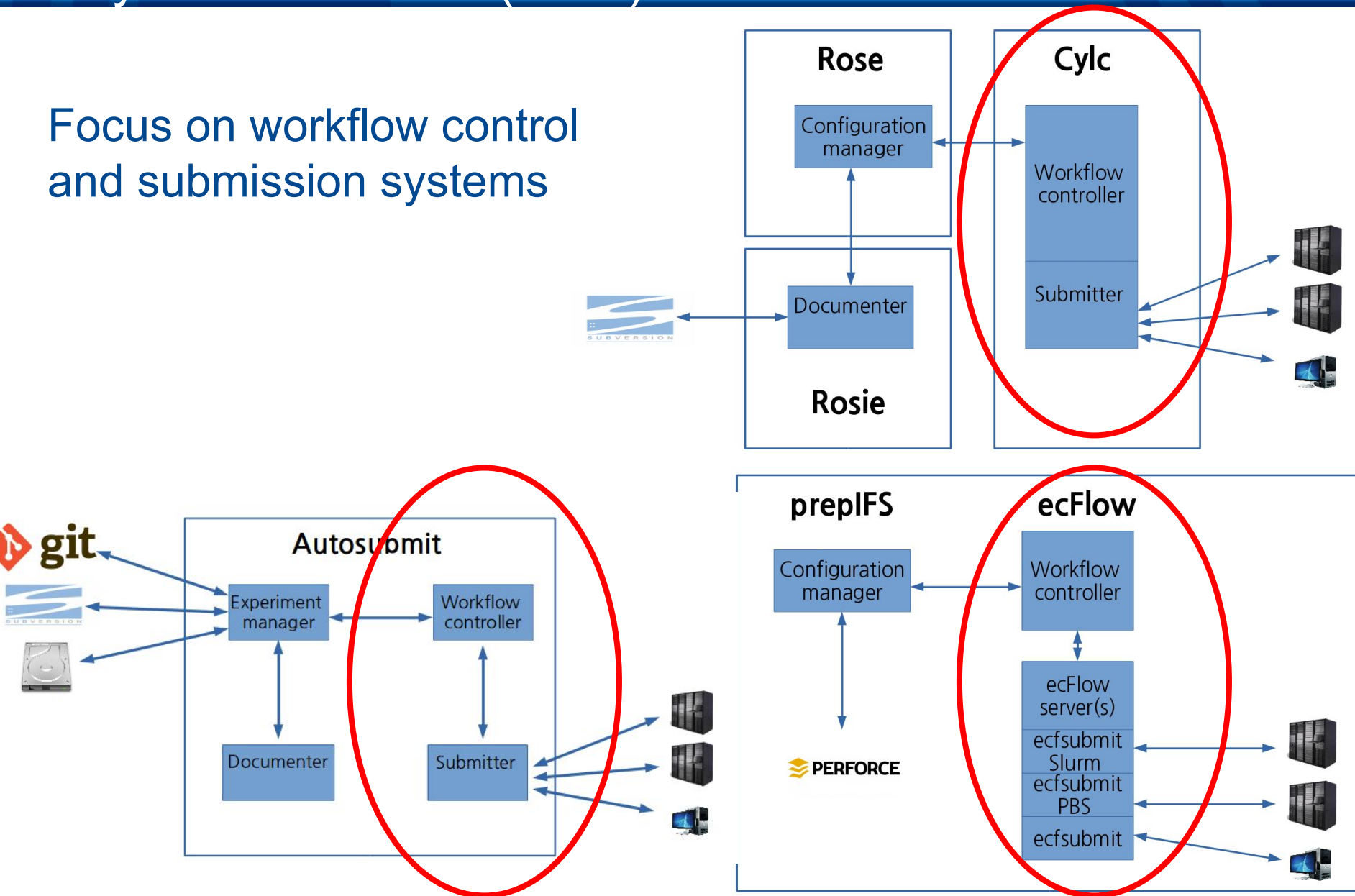




Assessment report on Autosubmit, Cylc and ecFlow (D9.3)



Focus on workflow control
and submission systems



Part 1: Compared features:

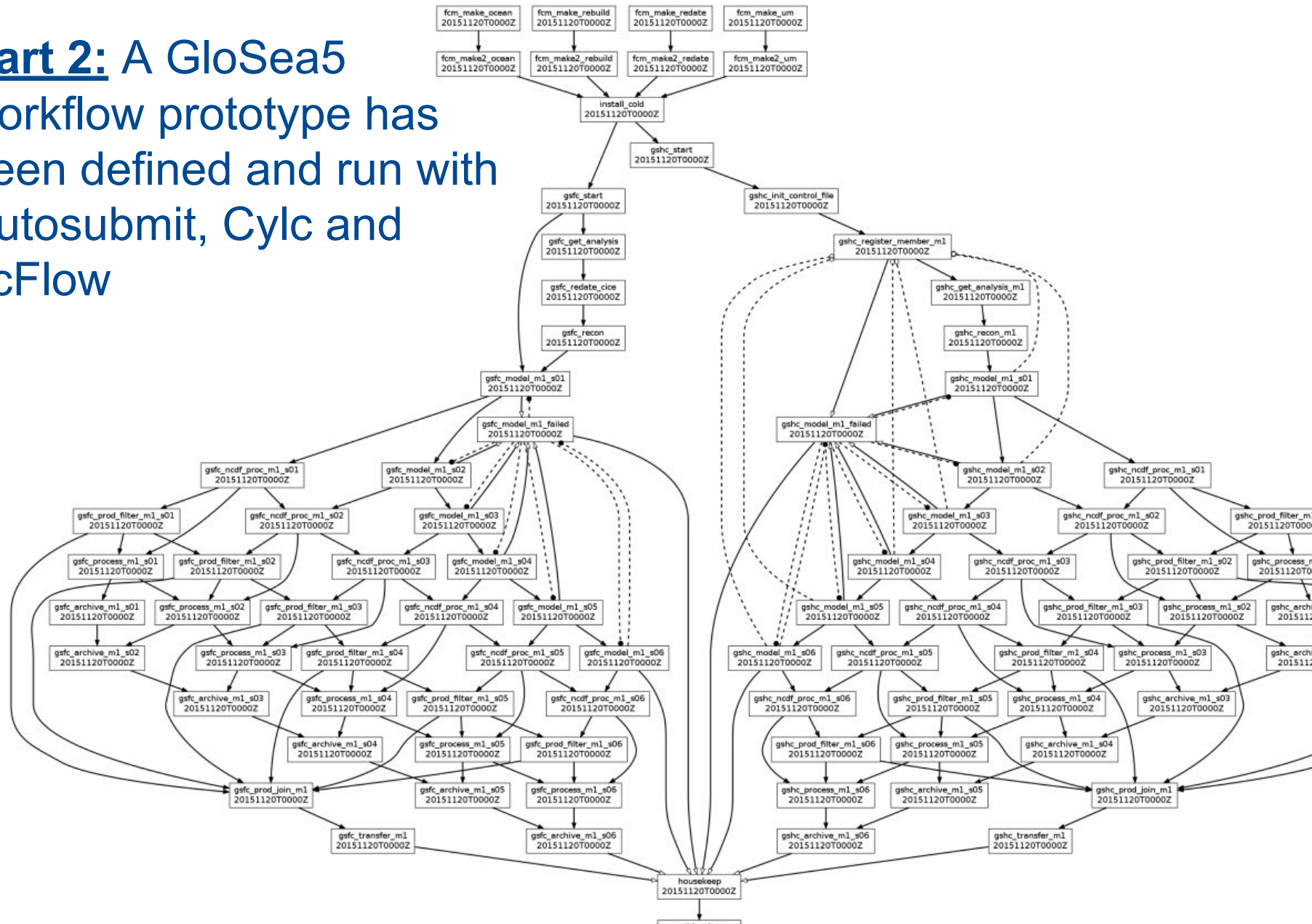
- Portability
- Task communication
- Support for remote platforms
- Support for different workload managers
- Fault tolerance
- Support for automated error recovery
- Support for date/time cycling
- Monitoring and intervention tools
- Support for generated workflows
- Scalability

Document available here: <https://goo.gl/IKqIjV>

Assessment report on Autosubmit, Cylc and ecFlow (D9.3)



Part 2: A GloSea5 workflow prototype has been defined and run with Autosubmit, Cylc and ecFlow



(1) Portability

ecFlow

- Client / server installation

(2) Task communication

ecFlow

- Restrictive firewalls issue
- Not always possible to run server in login nodes

(3) (4) Support for remote platforms / Support for workload managers

ecFlow

- Restrictive firewalls issues
- Scripts for LoadLeveler (adapted for PBS, Sun/Oracle Grid Engine and Slurm)

(5) (6) Fault tolerance / Automated recovery error

All tools acceptable features

(7) Support for date / time cycling

Autosubmit

- No families
- No clock time triggered tasks

(8) Monitoring and intervention tools

Autosubmit

- No GUI

(9) Support for generated workflows

Autosubmit

- CONF. FILE

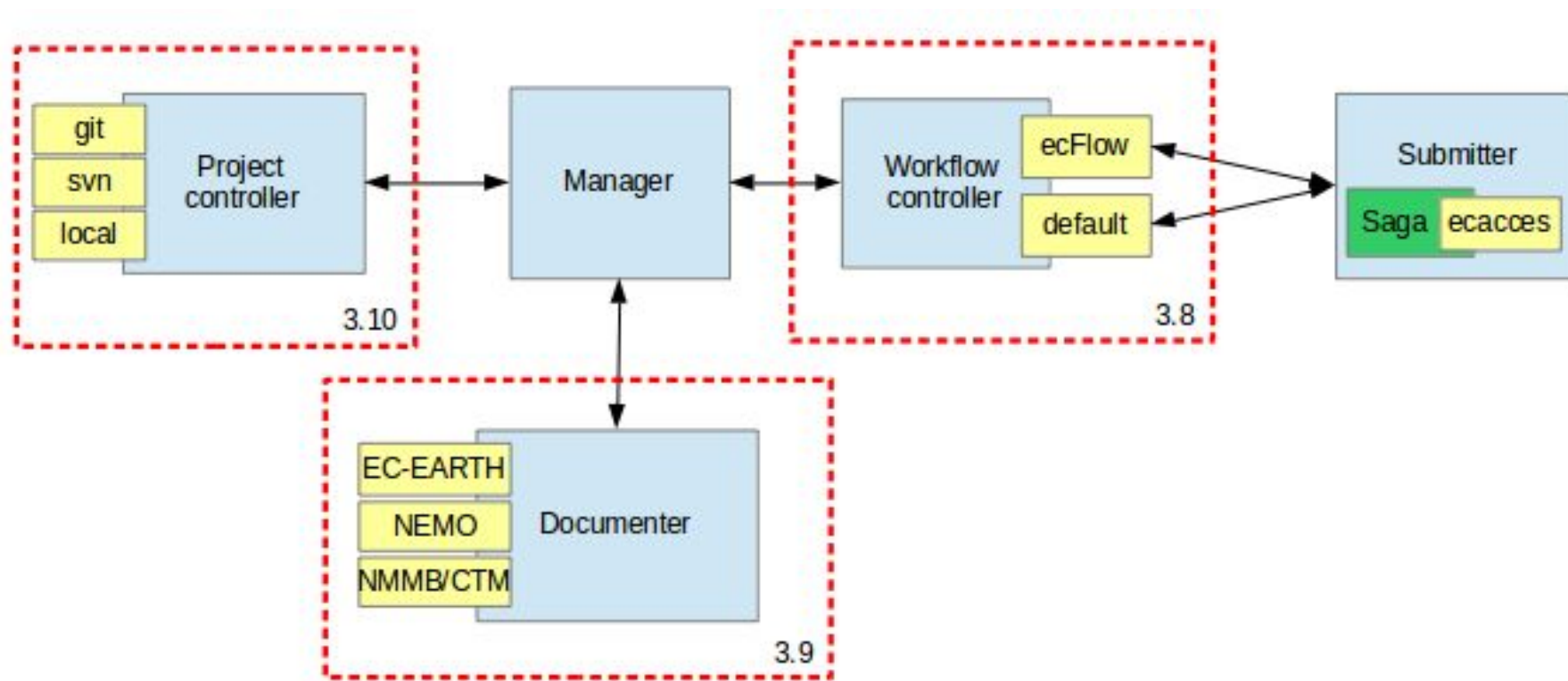
Cylc

- CONF. FILE + JINJA2

(10) Scalability

All tools reasonable scalability

| Best Options | Autosubmit | Cylc | ecFlow |
|--|-----------------------|-----------------------|--------------------------------|
| Portability | ✓ | ✓ | ~ CLIENT / SERVER installation |
| Task communication | ✓ | ✓ | ✓ |
| Support remote platforms | ✓ | ✓ | ~ RESTRICTIVE FIREWALLS |
| Support workload mangrs. | ✓ | ✓ | ~ ecf_submit scripts |
| Fault tolerance + Automated error recovery | ✓ | ✓ | ✓ |
| Support date/time cycling | ~ NO FAMILY / TRIGGER | ✓ | ✓ |
| Monitoring & interv. tools | ~ NO GUI | ✓ | ✓ |
| Support generated workfl. | ~ CONF. FILE | ~ CONF. FILE + JINJA2 | ✓ |
| Scalability | ✓ | ✓ | ✓ |







**Barcelona
Supercomputing
Center**

Centro Nacional de Supercomputación



Thank you!

For further information please contact

joan.lopez@bsc.es

domingo.manubens@bsc.es